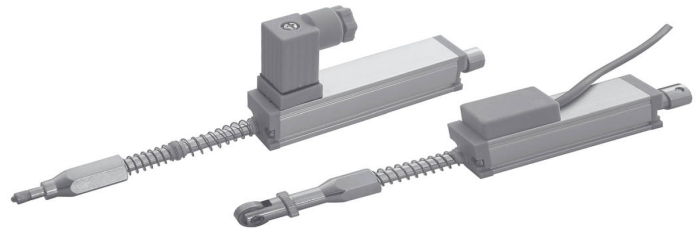
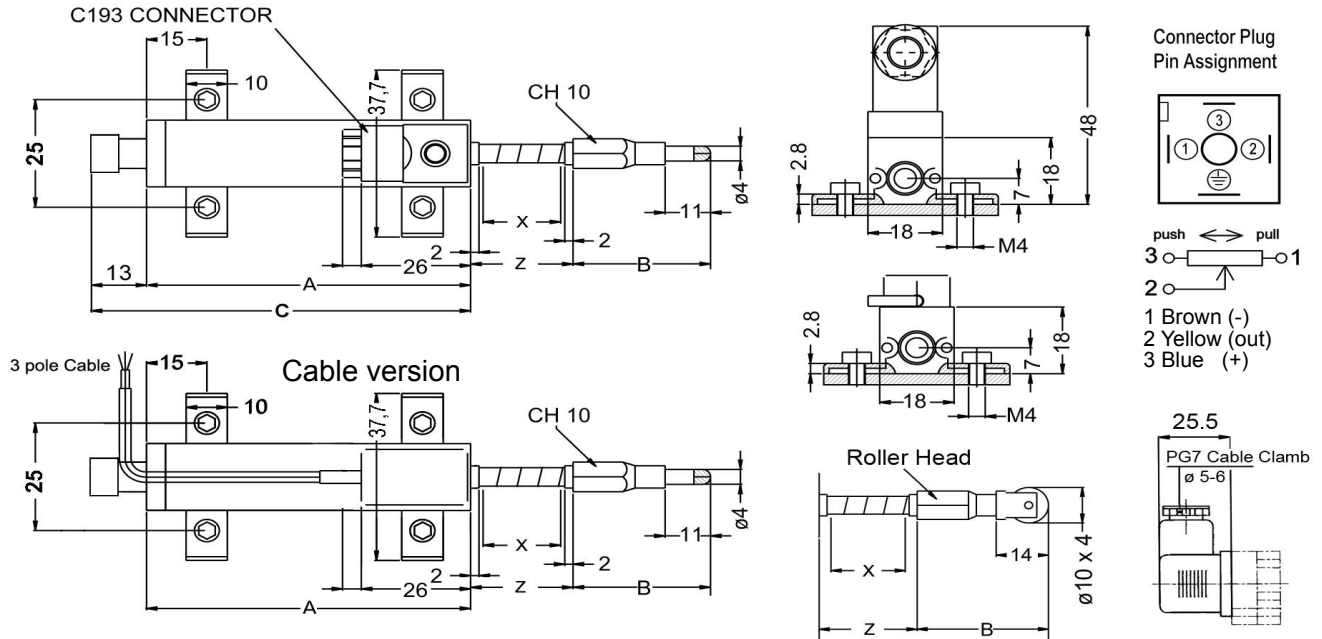


Potentiometric Linear Motion Sensor Stroke Ranges 10 - 50mm

- Compact Design for Limited Space
- Double Slide Bearing
- Excellent Repeatability $\pm 50\mu\text{m}$
- Spring pre-loaded



Please note: The specification and information in this datasheet cannot consider all special demands that are caused by the application. Because of this, they are no general description of the properties of the product. Megauto does not assume any responsibility for damages due to improper application of our products. The user has to ensure by its own, that the products used are suitable for his application. Megauto does not warrant the reproducibility or published applications.



ELECTRICAL CHARACTERISTICS

Resistance Element	Conductive Plastic
Standard Resistance Values	1k/5kOhms $\pm 20\%$
Independent Linearity Tolerance	(typ. IEC60393) $\pm 0,1\%$
Resolution	quasi infinite
Repeatability	(typ. IEC60393) $\pm 50\mu\text{m}$
Input Voltage	60VDC (max.)
Recommended Wiper Current	1 μA (max. 10mA)
Sealing	IP45
Power Dissipation	3W
Dielectric Strength	500 VAC

MECHANICAL CHARACTERISTICS

Operating force	>5N
Operating speed	5m/s (max.)
Life (movements)	(typ. IEC60393) 20×10^6
Operating temperature (°C)	-30°C to +85°C

MATERIAL

Housing	Anodized aluminium
Link ball/roller head	stainless steel

Application: Pre-loaded spring return linear motion sensors are widely used in quality control systems. Additional favourite applications are for instance camera position feedback devices.

ORDERING INFORMATIONS

MTR18	RL	25	1k	K or ST	2410
Typ	Head	Model	Ω	electr. contact	output

DIMENSIONS / RESISTANCES

(Dimensions in mm)	Roller Head			Ball Head		
Model*	10	25	50	10	25	50
Housing -A-	48	63	88	48	63	88
Dimension -B-	43	43	51	32	32	40
Dimension -C-	114	149	207	108	138	196
Electr. Travel -X-	11	28	51	11	26	51
Mech. Travel -Z-	15	30	55	15	30	55
Resist. $\pm 20\%$ (k Ω)	1	1	5	1	1	5

OPTIONS

- Roller head (RL), ball head (BA)
- Connector version (ST) or cable version (K)
- electronic module (signalconditioner)
- length 75 mm and 100 mm on request

* All mounting parts are included (clamps).

MTRB

with external electronics (signalconditioner) for analog signal output.
 Supply Voltage: 12...30 VDC
 current consumption: ma 20 mA
 signal output: 0-10VDC, 4-20mA factory adjustable